

A Replacement Handle for a Harbor Freight® MIG Welder

By R. G. Sparber

Copyright protects this document.¹



My welder weights around 45 pounds. It came with this flimsy plastic handle. Making things worse, it was a reconditioned unit and the handle was damaged. So it was just a matter of time before it would fail. Rather than tempt fate, I decided to replace it. The plastic handle was the extreme of inadequate. My new handle is close to the extreme of overkill.

¹ You are free to copy and distribute this document but not change it.



Clearly the original plastic handle was on its last legs.

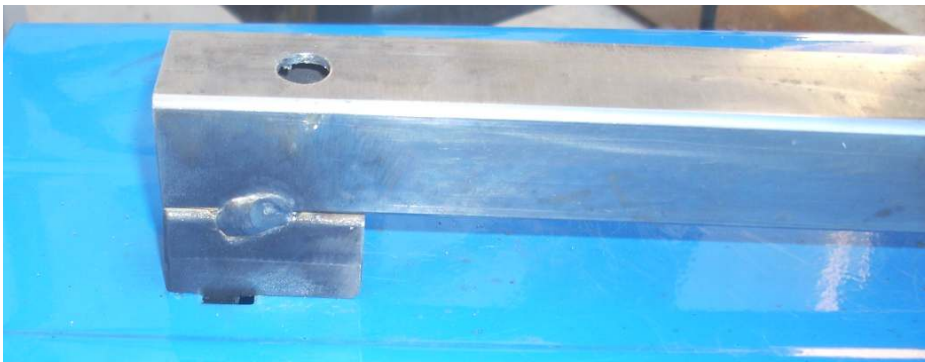


I did not measure anything in the fabricating of this handle. It was all cut to fit. I used my bandsaw to shape the various parts.

You can see a hole in the back face of the large square tube. I used a threaded rod with nuts on the end for a clamp. It was then easy to position the handle before welding.



The handle was fitted such that it will not come off. This weld between handle and vertical tube would have to be ground off if I ever do need to remove the handle.



locking screw.

The back end of the handle was made by cutting up some 1" x 1" tubing to fit the hole in the cover. Then it was welded to the handle. The hole in the top of the handle was necessary to provide access to the

I welcome your comments and questions.

Rick Sparber
Rgsparber@aol.com
Rick.Sparber.org