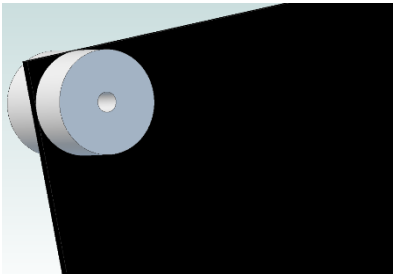


A Sheetmetal Filing Button, Version 1.1

By R. G. Sparber

Protected by Creative Commons.¹



Real filing buttons are hardened cylinders with a hole in the center. They come in pairs and are bolted through the stock near a corner. Then you file down to the button and get a very precise rounded result.

My problem was that I didn't always want to drill that mounting hole. One solution is to use heat glue.



Here I have some 16 gage sheet steel and my “filing button”. Ok, it is really just a washer. But it will get me that nice rounded corner.



The first step was to get some hot glue on the face of the washer.

¹ This work is licensed under the Creative Commons Attribution 4.0 International License. To view a copy of this license, visit <http://creativecommons.org/licenses/by/4.0/> or send a letter to Creative Commons, PO Box 1866, Mountain View, CA 94042, USA.



I then flipped over the washer onto the stock and quickly heated it and the stock with a torch². It is easy to adjust while hot. When satisfied with its location, I sprayed the washer and stock with water.



The washer was glued tight enough to hold as I rough sawed the corner and then



ground close to the washer.



² I tried using a heat gun but it was way too slow. However, there would be less chance of damage with the gun rather than using a torch.



My disk sander finished the job.



Stock

Filing button (was hit by belt sander a little)



A quick blast from my torch and the washer falls off.

The glue residue came off with a razor blade.



You can see that the finished radius is a close match to the “filing button” and I didn’t have to drill a mounting hole.

Thanks to John Herrmann for finding typos.

I welcome your comments and questions.

If you wish to be contacted each time I publish an article, email me with just "Article Alias" in the subject line.

Rick Sparber

Rgsparber.ha@gmail.com

Rick.Sparber.org