

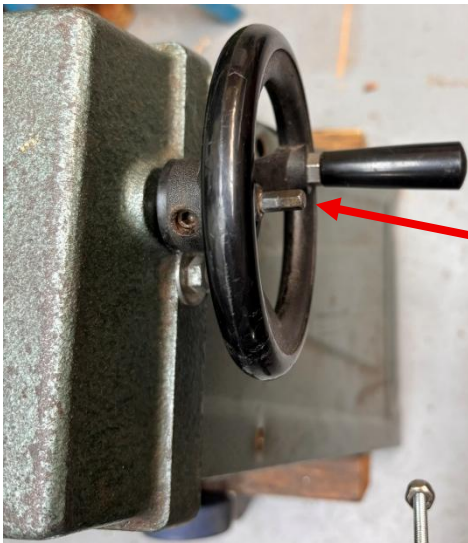
A Safer Speed Handle for a Horizontal/Vertical Bandsaw, Version 1.0

By R. G. Sparber

Protected by Creative Commons.¹



Many of us own one of these horizontal/vertical bandsaws. It is a time-tested design. But that doesn't mean we can't strive to improve on it. I've been tinkering with mine for decades.



Many years ago, I fitted the hub of the vise jaw handwheel with a hex drive.

It lets me quickly reposition the jaw during set-up.

I found that a gun-type electric screwdriver ran too fast, but the smaller electric screwdriver worked well.

¹ This work is licensed under the Creative Commons Attribution 4.0 International License. To view a copy of this license, visit <http://creativecommons.org/licenses/by/4.0/> or send a letter to Creative Commons, PO Box 1866, Mountain View, CA 94042, USA.



Of course, this generated another problem. The handle orbits the electric screwdriver and can catch my hand or clothing. Yet, for fine adjustments, the handle is invaluable, so I don't want to remove it.

Today I *reduced* the risk.



I replaced that long handle with a sealed ball bearing from my junk drawer.



While much shorter than the handle, it is still easy to grab and turn.



The washer keeps the bearing face off the handwheel, allowing it to spin freely. The split washer provides friction to keep the bolt in place.



I'm sure I can still hurt myself with this handle at a time of extreme stupidity, but it is safer. Call it an early warning device. If I can't be safe around this handle, don't turn on the saw!

I welcome your comments and questions.

Rick Sparber
Rgsparber.ha@gmail.com
Rick.Sparber.org