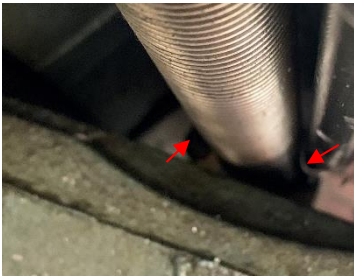


Allen Wrench Extension, Version 1.0

By R. G. Sparber

Protected by Creative Commons.¹



Under my mill table are a pair of Socket Head Cap Screws (SHCS). There near impossible to see (red arrows).

Every few years, I must slightly adjust these screws to compensate for wear in my X-axis backlash takeup nut. I gain full access by removing the table but this is a major pain.



With a few minutes of effort, I built this allen wrench extension.



The rod came from my scrap drawer and had the two cross drilled holes in it.

¹ This work is licensed under the Creative Commons Attribution 4.0 International License. To view a copy of this license, visit <http://creativecommons.org/licenses/by/4.0/> or send a letter to Creative Commons, PO Box 1866, Mountain View, CA 94042, USA.



I drilled the right end #4 and tapped it 1/4-20 to a depth of about 1/2 inch. Then I screwed in a SCHS until it bound up in the partially cut threads at the bottom of the hole.



The allen wrench fits through the hole (red arrow) and the hose clamp secures it to the rod.



The holder fits a large range of allen wrenches.

I welcome your comments and questions.

If you want me to contact you each time I publish an article, email me with “Subscribe” in the subject line. In the body of the email, please tell me if you are interested in metalworking, software plus electronics, kayaking, and/or the Lectric XP eBike so I can put you on the right distribution list.

If you are on a list and have had enough, email me “Unsubscribe” in the subject line. No hard feelings.

Rick Sparber

Rgsparber.ha@gmail.com

Rick.Sparber.org